

# Ames Multi-Engine Fly 2008

AMA Sanctioned



**Entry Fee and Food: \$10**

**Refunded to anyone who flies a multi-engine plane!!**

**Dates:**

September 6, 2008: 9 AM to last good light

Rainout date: September 7

**Where?**

Swallow Field, home of the Central Iowa Aeromodelers (C.I.A.)

7.2 miles from Ames, Iowa on I-35

50' ft x 500 ft smooth strip inside a 620 ft X 350 ft, mature grass runway, primary oriented North-South, unlimited over-fly zones. Plenty of parking, toilet facilities, picnic tables and shelter. No plug-ins.

**Directions:**

From I-35:

Exit 111A east (Hwy 30) go 1.7 miles to

Right on R-70 (south) go 5.5 miles to Swallow Field

From Hwy 30:

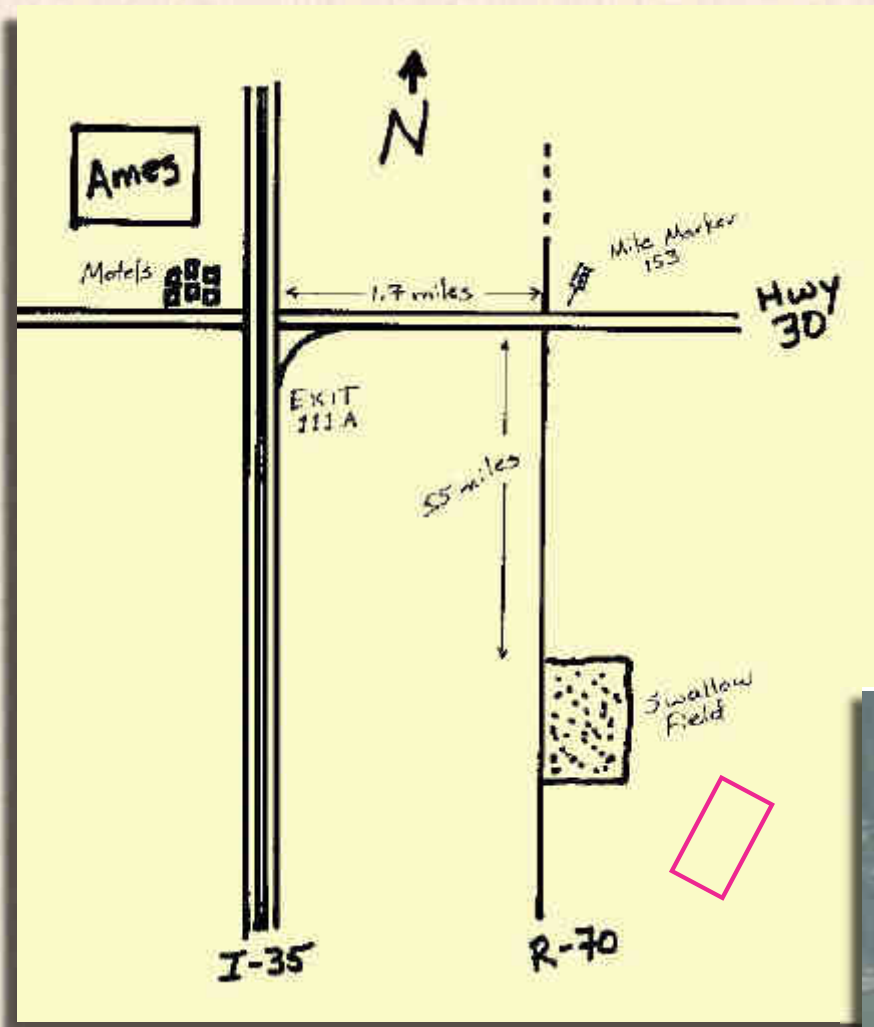
Turn south on R-70 at mile marker 153.

Go 5.5 miles to Swallow field

Central Iowa  
Aeromodelers

**Food All Day**

**Sandy's Famous BBQ and Fixin's**



Contacts:

Mark Taylor  
 (515) 233-1452  
[mktaylor145@earthlink.net](mailto:mktaylor145@earthlink.net)

Denny Goodrich  
 (515) 292-6326  
[dennyginia@yahoo.com](mailto:dennyginia@yahoo.com)

Rich Cronk  
 (515) 382-3755  
[richrose@midiaowa.net](mailto:richrose@midiaowa.net)

Dave Sult  
 (515) 387-1129  
[wings4fun@iowatelecom.net](mailto:wings4fun@iowatelecom.net)



# MOTELS

(all at Exit 111B to U.S. 30, where you get off I-35 and 7.2 miles from field):

Hampton Inn: (515) 239-9999  
 (800) 426-7866

Super-8: (515) 232-6510  
 (800) 800-8000

Comfort Inn: (515) 232-0689  
 (800) 228-5150

Country Inn & Suites: (515) 233-3935  
 (800) 456-4000

AmericInn: (515) 233-1005  
 (800) 634-3444

Heartland Inn: (515) 233-6060  
 (800) 334-3277

Microtel: (515) 233-4444



Pictures from  
September, 2007



Photos on this page by Lloyd and Starla Swanson

